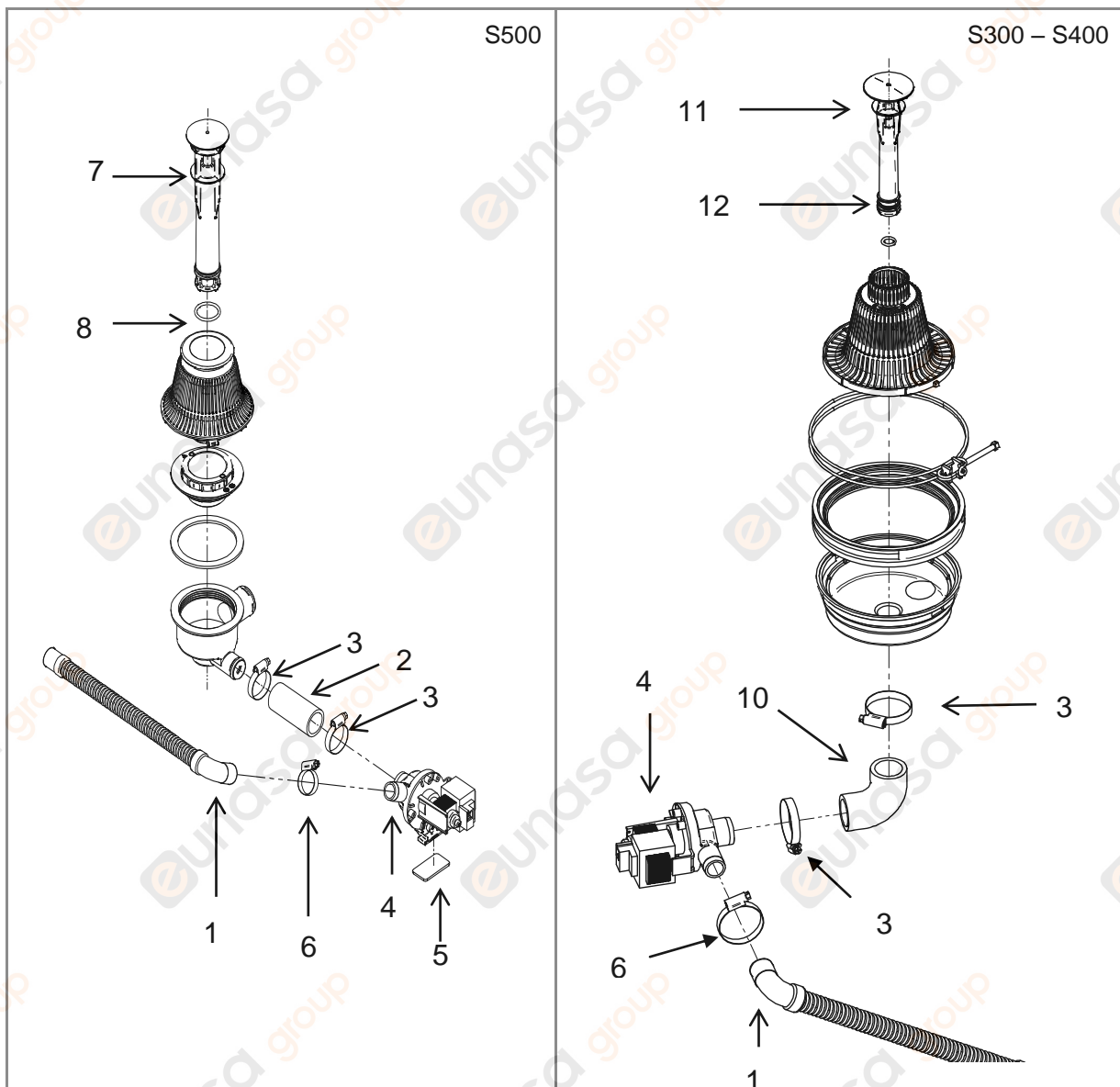


19013376

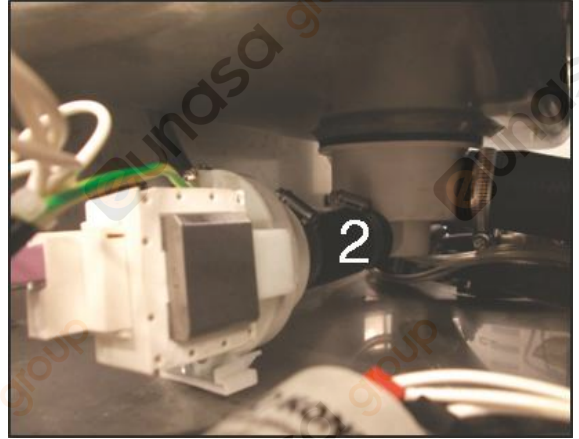
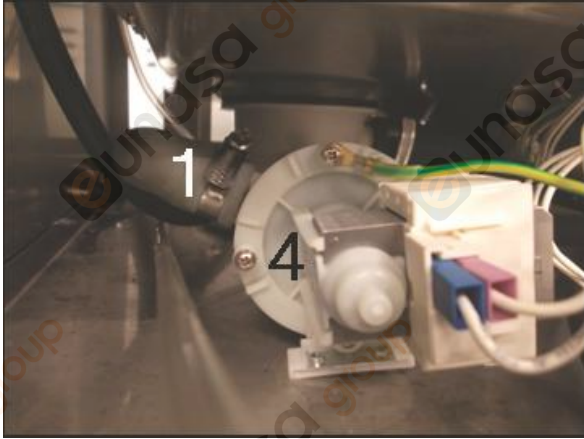
KIT POMPE VIDANGE EVO AF (S500) ET LVS (S300 - S400)

| N° | RÉF. | DESCRIPTION | QTÉ. |
|----|----------|--|------|
| 1 | 12023666 | TUYAU VIDANGE | 1 |
| 2 | 12041924 | CONDUIT BAC-POMPE VIDANGE | 1 |
| 3 | 12009986 | COLLIER DE SERRAGE SANS FIN DIN 3017 W2 32-50L | 2 |
| 4 | 12094265 | MOTOPOMPE 220V AC 1N 50/60HZ 37KW UL | 1 |
| 5 | 12010021 | JOINT GUIDE | 1 |
| 6 | 12010023 | COLLIER DE SERRAGE 2032 INOX | 1 |
| 7 | 12114815 | DÉVERSOIR VERSION BD | 1 |
| 8 | 12115850 | JOINT TORIQUE Ø32 X 3,5MM | 1 |
| 10 | 12094016 | CONDUIT ASPIRATION LVS POMPE VIDANGE HA | 1 |
| 11 | 12115815 | DÉVERSOIR_EVCO-21_B | 1 |
| 12 | 12104085 | JOINT TOR. DIAM. INT. 19,2X3 | 1 |
| 13 | 12000647 | EMBALLAGE EN CARTON 260X260X260 | 1 |
| 14 | 12126010 | Manuel d'instructions | 1 |

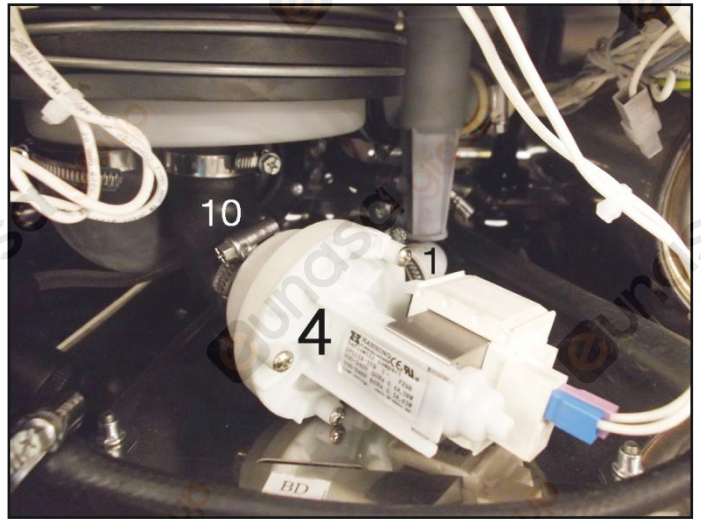


IMAGES




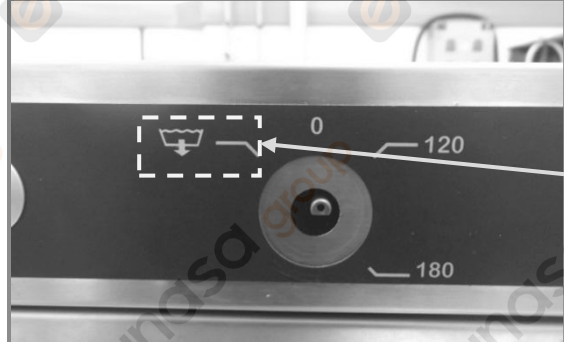

S500



S300 - S400



EXÉCUTION

| | |
|---|---|
|  | <p>L'insert bouche les performances de vidange.</p> |
|  | <p>Extraire le bouton de commande.</p> |
|  | <p>Extraire l'insert.</p> |
|  | <p>Lors de l'extraction de l'insert, les performances de vidange devient visible.</p> |
|  | <p>Remonter le bouton de commande.</p> |